

***Excel Two Bag Catcher
42"/46"/48"/54" Decks
Operator's Manual***

EXCEL

INDUSTRIES

....

P.O. Box 7000

...

Hesston, Kansas

•

67062-2097

Table of Contents

General Information	1-1
Safety Precautions.	2-1
Assembly Instruction	3-1
Operation	4-1
Maintenance & Storage	5-1
Illustrated Parts List	6-1

GENERAL INFORMATION

To the new owner

The purpose of this manual is to assist owners and operators in maintaining and operating the Excel Two Bag Catcher. Please read it carefully; information and instructions furnished can help you achieve years of dependable performance.

Using this manual

General operation, adjustment and maintenance guidance is outlined for both the experienced and novice Excel user. Operating conditions vary considerably and cannot all be addressed individually. Through experience, however, operators should find no difficulty in developing good operating skills suitable to most conditions.

Directions used in this manual, for example RIGHT or LEFT, refer to directions when seated on mower facing forward, unless otherwise stated.

Photographs and illustrations used were current at the time of printing, but subsequent production changes may cause your machine to vary slightly in detail. Excel Industries, Inc. reserves the right to redesign and change the machine as deemed necessary, without notification. If a change has been made to your machine which is not reflected in this owner's manual, or the parts manual, see your Excel dealer for current information and parts.

Warranty registration

The Delivery and Warranty Registration form must be completed and signed to validate your warranty protection. As the new equipment owner, you are expected to see that the card is completed and forwarded to Excel Industries, Inc. at time of delivery.

Be sure to register the mower plus each attachment that displays a model and serial identification number plate with Excel Industries, Inc.

IMPORTANT: Any unauthorized modification, alteration, or use of non-approved attachments voids the warranty and releases Excel Industries, Inc. from any liability arising from subsequent use of this equipment.

Parts and service

Use original Excel replacement parts only. These parts are available through your local Excel dealer. To obtain prompt, efficient service, always provide the following information when ordering parts:

1. Correct part description and number, as given in the parts manual supplied with your owner's packet.
2. Correct model number.

All warranty repair and service must be handled through an authorized Excel dealer. Arrangements should be made through your local service center.

SAFETY PRECAUTIONS



This safety alert symbol is used to call attention to a message intended to provide a reasonable degree of PERSONAL SAFETY for operators and other persons during the normal operation and servicing of this equipment.

DANGER – denotes immediate hazards which WILL result in severe personal injury or death.

WARNING – denotes a hazard or unsafe practice which COULD result in severe personal injury or death.

This manual uses two other words to highlight information. **IMPORTANT** calls attention to special mechanical information and **NOTE**: emphasizes general information worthy of special attention.

All operators should read this manual and be instructed about safe operating and maintenance procedures. This is the owner's responsibility.

Improper use or maintenance by the operator or owner can result in injury. To reduce the potential for injury, comply with these safety instructions and always pay attention to the safety alert ▲ symbol, which means DANGER or WARNING - "personal safety instructions." Failure to comply with the instructions may result in personal injury or death.

Incorrect usage of this machine may result in severe injury. Personnel operating and maintaining it should be trained in the proper use and should read the manuals completely and thoroughly before attempting to set-up, operate, adjust, or service this machine.

It is the **owner's responsibility** to make certain that the operators and mechanics read and understand this manual. It is also the **owner's responsibility** to make certain that the operators and mechanics are qualified and physically able individuals, properly trained in the operation of this equipment. All operators and mechanics must become familiar with the safe operation of the equipment, operator controls and safety signs.

Never let children or untrained people operate or service the equipment. Local regulations may restrict the age of the operator.

The owner/user can prevent and is responsible for accidents or injuries occurring to themselves, other people or property.

The owner should also ensure that the operator/mechanic know that they are responsible for their own safety as well as the safety of other persons within the vicinity. **Remember**, the operator is responsible for accidents or hazards occurring to other people or their property.

- ▲ Evaluate the terrain to determine what accessories and attachments are needed to properly and safely perform the job. Only use accessories and attachments approved by the manufacturer.
- ▲ Always stop on level ground, disengage deck clutch, place steering control lever in the park brake position,

stop engine and remove ignition key before leaving operator's seat for any reason including emptying the catcher bags or unlogging the chute.

- ▲ Always be aware of any obstructions, especially small children, when backing or unloading the bags.
- ▲ Always keep safety shields and covers in place, except for servicing.
- ▲ Never work on mower deck when the engine is running.
- ▲ Never operate machine with bagger lid in the raised position except for unloading.
- ▲ Never attempt high speed maneuvering in crowded or congested areas.
- ▲ Always operate with complete catcher system, mulching system or side discharge chute in place and in the lowest position.
- ▲ Always keep clear of the mower blades and attachments during their operation.
- ▲ Turn off blades when not mowing.
- ▲ Stop the engine before removing the grass catcher or unlogging the discharge chute. Never clear the discharge chute with the engine running. Turn off the engine and be sure the blades have stopped before cleaning. Use a stick to clear a plugged discharge area. **Never use your hand!**
- ▲ **Clean flammable material from machine. Prevent fires by keeping engine compartment, exhaust area, battery, fuel line, fuel tank and operator's station clean of accumulated trash, grass clippings, and other debris. Always clean up spilled fuel and oil.**
- ▲ Grass collection system components are subject to wear, damage and deterioration, which could expose moving parts or allow objects to be thrown. Frequently check components and replace with manufacturer's recommended parts when necessary.
- ▲ Never direct discharged material toward anyone. Avoid discharging material against a wall or obstruction. Material may ricochet back towards the operator. Always disengage the blades and wait for them to stop before crossing gravel drives, walks or roads.

WARNING: Thrown objects!

Part Number 601624



- **Never operate the mower deck with side deflector damaged, altered, removed or in raised position, except when the entire grass catcher attachment or mulching system is being used.**

ASSEMBLY INSTRUCTION

These instructions apply to the assembly of the Excel Two Bag Catcher to an Excel 42", 46", 48" and 54" mower.

It is intended that these units be installed by trained Excel service personnel. If additional assistance is required, contact the Excel Customer Service Department.

Directions given in these instructions, for example left and right, refer to direction while seated on the mower.

Before proceeding, read thru the following instructions to familiarize yourself, while at the same time identify and inventory kit parts supplied.

Unpack and inspect all parts. Notify carrier of any shipping damages immediately.

Parts list – 42" & 46"

Part No.	Description	Qty
N/A	CATCHER BAG ASSEMBLY	2
112679	PLATE, HITCH MOUNT	1
705954	CS .500-13 X 1.25 HX G Z	1
036244	CS .375-16 X 1.00 HX G5	6
112677	FRAME BRACE, LH	1
767954	FW .406 x .812 x .060	20
112678	FRAME BRACE, RH	1
054502	NT .375-16	8
080655	CS .376-16 X 1.50 HX G5	2
767962	FW .531 X 1.063 X .09	6
112707	SHIELD	1
008193	NT .500-13 UNT LK	3
111544	WEIGHT PLATE	6
111462	DEFLECTOR	1
077859	CS .500-13 X 3.25 HX G5	2
112449	CHUTE PLATE	1
112655	CATCHER SUPPORT	1
602666	6.00" X 31.0" FLEX TUBE	1
602577	CATCHER CHUTE	1
N/A	2 BAG CATCHER	1
034272	NT .312-18	2
086660	NT .375-16 NY	2
025395	CB .375-16 X 1.00	2
036236	CS .312-18 X 1.00	2
768523	FW .343 X .687 X .051	4
112680	FRAME BRACE, LH ROPS	1
112681	FRAME BRACE, RH ROPS	1
077859	CS .500-13X3.250 HX G5	4
023317	NT .500-13 UNT LK G8 ZN	4
773275	BUSHING SPACER	2
000398	CLAMP	1
016410	CS .375-16 X 2.00 G5 ZN	1
016899	NT .375-16 HXFLK ZN	1

NOTE: It will be necessary to replace the right hand mower blades when using this catcher. The catcher does not include these blades. Therefore, you must order the mower blades separately. Order one of part number **793935**

when attaching the catcher to a 42" deck. Order one of part number **602414** when attaching the catcher to a 46" deck.

Parts list – 48"

Part No.	Description	Qty
N/A	CATCHER BAG ASSEMBLY	2
112679	PLATE, HITCH MOUNT	1
705954	CS .500-13 X 1.25 HX G Z	1
036244	CS .375-16 X 1.00 HX G5	6
112677	FRAME BRACE, LH	1
767954	FW .406 x .812 x .060	20
112678	FRAME BRACE, RH	1
054502	NT .375-16	8
080655	CS .376-16 X 1.50 HX G5	2
767962	FW .531 X 1.063 X .09	6
112707	SHIELD	1
008193	NT .500-13 UNT LK	3
111544	WEIGHT PLATE	6
111462	DEFLECTOR	1
077859	CS .500-13 X 3.25 HX G5	2
112655	CATCHER SUPPORT	1
602677	6.00" X 31.0" FLEX TUBE	1
N/A	2 BAG CATCHER	1
034272	NT .312-18	3
086660	NT .375-16 NY	2
025395	CB .375-16 X 1.00	2
036236	CS .312-18 X 1.00	3
768523	FW .343 X .687 X .051	6
602594	CATCHER CHUTE	1
112454	CATCHER BAFFLE	1
112461	CATCHER CHUTE BRACE	1
795757	MOWER BLADE (16.50")	2
112680	FRAME BRACE, LH ROPS	1
112681	FRAME BRACE, RH ROPS	1
077859	CS .500-13X3.250 HX G5	4
023317	NT .500-13 UNT LK G8 ZN	4
113616	48" DECK TEMPLATE	1
773275	BUSHING SPACER	2
000398	CLAMP	1
016410	CS .375-16 X 2.00 G5 ZN	1
016899	NT .375-16 HXFLK ZN	1

Parts list – 54"

Part No.	Description	Qty
N/A	CATCHER BAG ASSEMBLY	2
112679	PLATE, HITCH MOUNT	1
705954	CS .500-13 X 1.25 HX G Z	1
036244	CS .375-16 X 1.00 HX G5	6
112677	FRAME BRACE, LH	1
767954	FW .406 x .812 x .060	20

Part No.	Description	Qty
112678	FRAME BRACE, RH	1
054502	NT .375-16	8
080655	CS .375-16 X 1.50 HX G5	2
767962	FW .531 X 1.063 X .09	6
112707	SHIELD	1
008193	NT .500-13 UNT LK	3
111544	WEIGHT PLATE	6
111462	DEFLECTOR	1
077859	CS .500-13 X 3.25 HX G5	2
112655	CATCHER SUPPORT	1
602677	6.00" X 31.0" FLEX TUBE	1
N/A	2 BAG CATCHER	1
034272	NT .312-18	3
086660	NT .375-16 NY	2
025395	CB .375-16 X 1.00	2
036236	CS .312-18 X 1.00	3
768523	FW .343 X .687 X .051	6
602595	CATCHER CHUTE	1
112468	CATCHER BAFFLE	1
112462	CATCHER CHUTE BRACE	1
602416	MOWER BLADE (20.50")	1
112680	FRAME BRACE, LH ROPS	1
112681	FRAME BRACE, RH ROPS	1
077859	CS .500-13X3.250 HX G5	4
023317	NT .500-13 UNT LK G8 ZN	4
773275	BUSHING SPACER	2
000398	CLAMP	1
016410	CS .375-16 X 2.00 G5 ZN	1
016899	NT .375-16 HXFLK ZN	1

Assembly

NOTE: Refer to illustrated parts listings when assembling the unit.



WARNING: Allow engine and muffler to cool before assembling the unit to the mower.



WARNING: Never work under the machine or attachment unless it is safely supported with jack stands. Make certain machine is secure when it is raised and placed on the jack stands. The jack stands should not allow the machine to move when the engine is running and the drive wheels are rotating. Use only certified jack stands. Use only appropriate jack stands, with a minimum weight rating of 2000 pounds to block the unit up. Use in pairs only. Follow the instructions supplied with the vehicle stands.

1. Park the mower on a flat surface. Always place the deck clutch switch in the **disengaged position**, place the steering control levers in the park brake position and shut off the ignition switch and remove the key from the switch. Disconnect the negative battery cable. Block up mower on jack stands to access blades.

2. Remove the discharge chute and discharge chute plate.
NOTE: Retain these parts as they will be re-installed when the Catcher is removed.

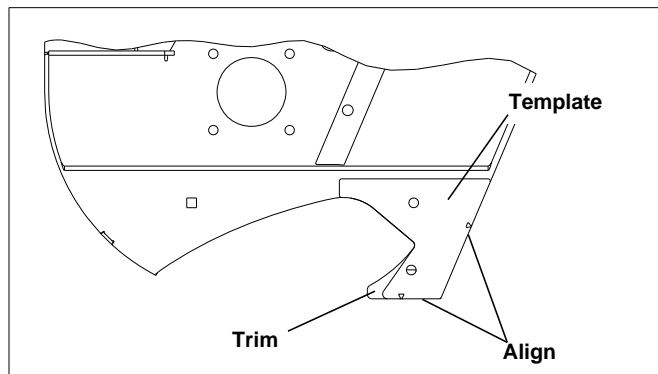


Figure 3-1

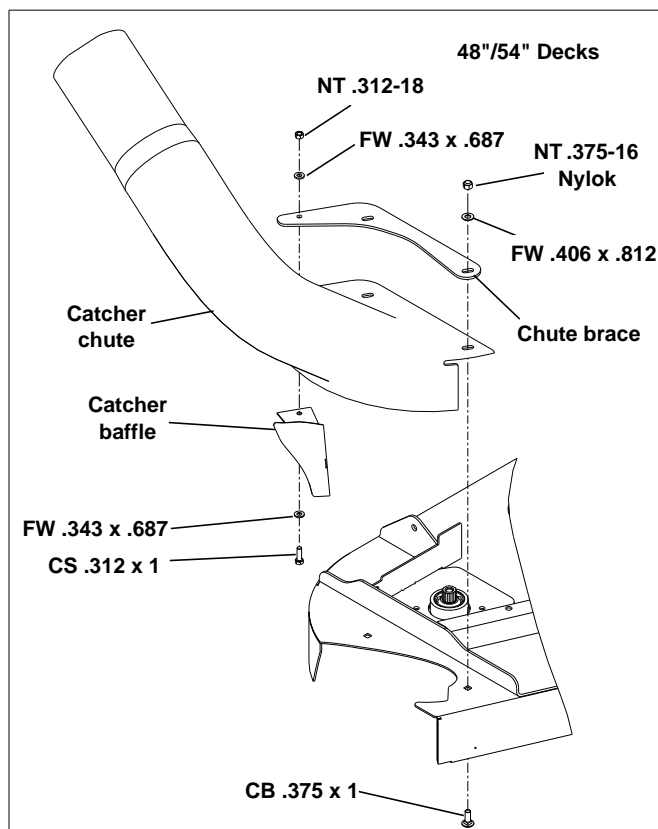


Figure 3-2

3. For 48" mowers with serial numbers prior to 11010000, the discharge opening will require modification. Align the supplied template with the front surface of the deck and edge of discharge opening. Figure 3-1 Mark the deck by tracing the inside edge of the template and trim the opening. Figure 3-1 Grind cut edges smooth and paint all bare metal.
4. **48"/54" Decks only:** Attach the chute baffle to the catcher chute. Do not tighten hardware at this time. Figure 3-2
Attach the catcher chute and chute plate to deck. Adjust baffle to fully close off the deck discharge opening. Tighten all hardware. Figure 3-2

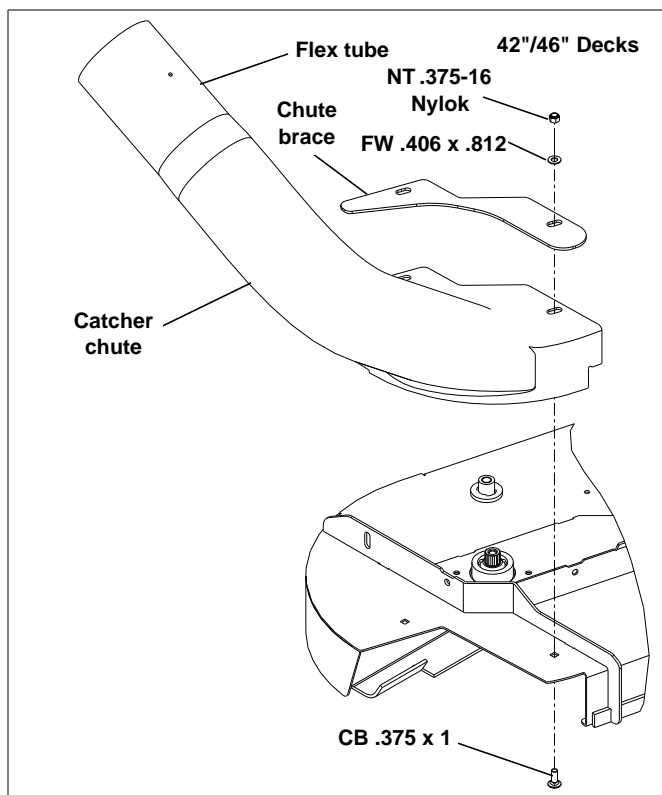


Figure 3-3

5. **42\"/>46\" Decks:** Attach the catcher chute and chute plate to deck. Tighten all hardware. Figure 3-3
6. Raise the front of the mower and deck up until the blades can be accessed easily. Place the mower on jack stands and do not allow the mower to move. Chock the rear wheels.



WARNING: Mower blades are sharp and can cut. Wrap the blade(s) or wear gloves and use extra caution when servicing them.

7. **42\"/>46\" Decks:** Remove the right side blade and replace with the new blade (not included with the catcher). Torque blades to 118 ft.-lbs (160.01 Nm).
- 48\" Decks** – Remove the right and center blades and replace with the blade included with the catcher. Torque blades to 118 ft.-lbs (160.01 Nm)
- 54\" Decks** – Remove the right blade and replace with the blades included with the catcher. Torque blades to 118 ft.-lbs (160.01 Nm). Figure 3-4



WARNING: Failure to correctly torque the bolt may result in the loss of the blade which can cause serious injury.

8. Remove the jack stands and lower the mower.

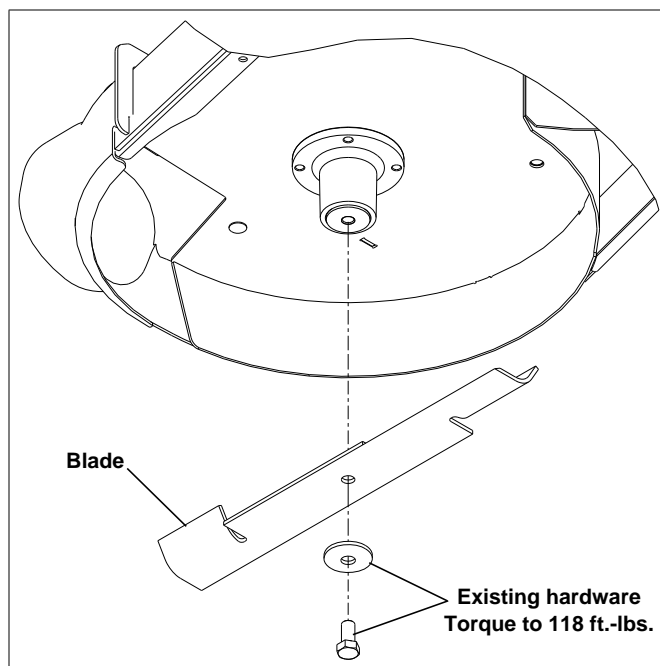


Figure 3-4

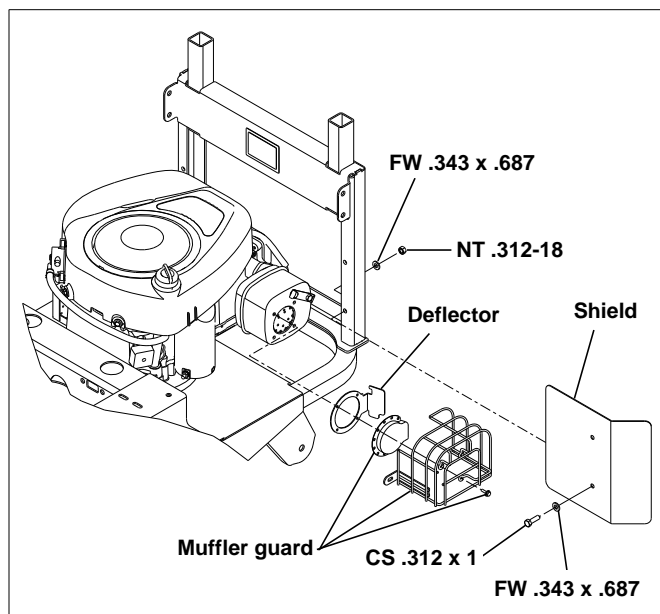


Figure 3-5



WARNING: Allow the engine to cool before proceeding to the next step.

9. Remove the muffler guard from the engine. Figure 3-5
10. Attach the deflector to the muffler along with the muffler guard using the existing hardware. Figure 3-5
11. Attach the hitch plate mount to the mower's hitch plate. Figure 3-6

12. Attach the catcher support to the hitch plate mount.
Figure 3-6

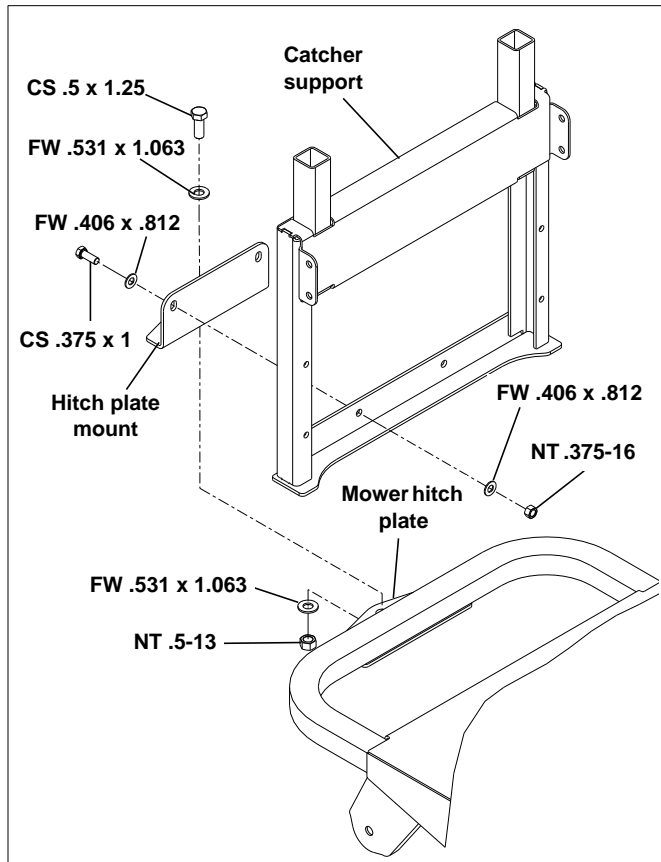


Figure 3-6

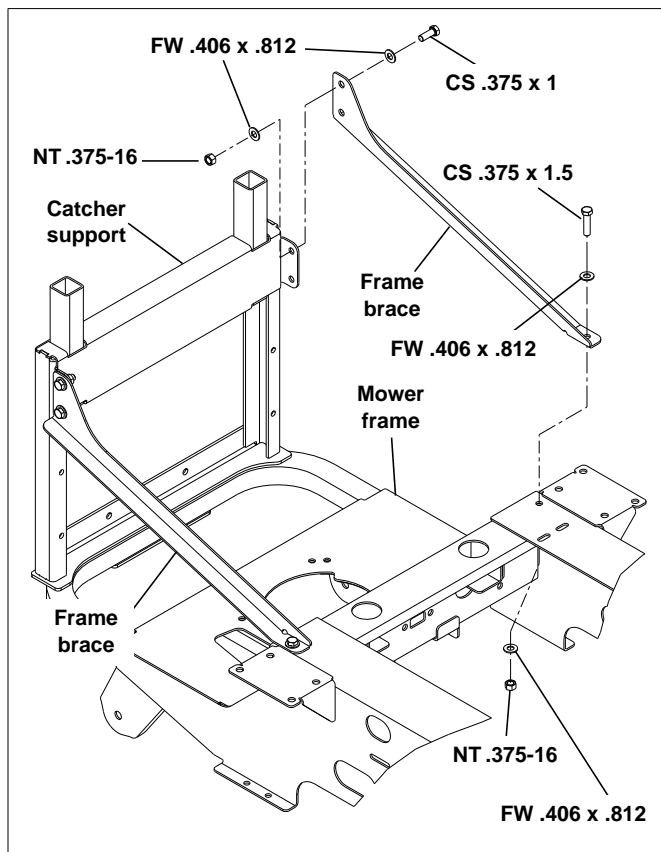


Figure 3-7

13. Attach the shield to the catcher support. Figure 3-5
14. For mowers with serial numbers prior to 1101000, (frames **without** ROPS pockets), attach the right and left frame braces to the catcher support and the mower frame. Figure 3-7
15. For mowers with serial numbers higher than 11010000 (frames **with** ROPS pockets), remove hardware attaching ROPS. Attach the right and left frame braces to the catcher support and the mower frame, using supplied hardware. Torque hardware to 55 ft.-lbs (74.6 N-m). Figure 3-8

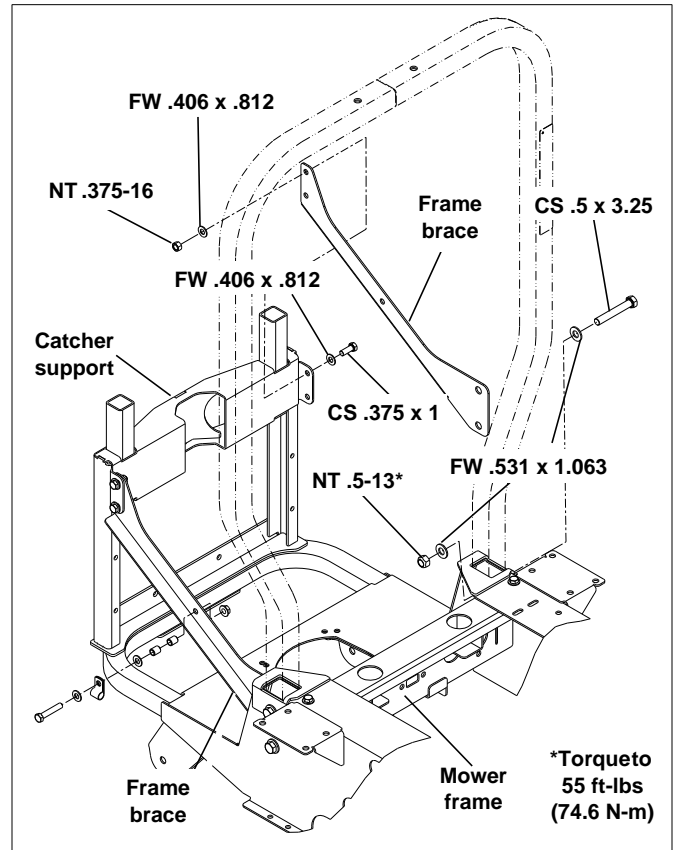


Figure 3-8

16. For mowers with **Kawasaki engines and with serial numbers higher than 11010000** (frames **with** ROPS pockets), remove the throttle cable stand-off bracket and clamp from the engine. Figure 3-9
NOTE: Retain these parts as they will be used if the catcher is ever removed from the mower. Attach the throttle cable, using the new clamp, spacer, and hardware, to the right frame brace. Figure 3-10
17. Slide the lid assembly onto the frame mounting tube. Figure 3-11
18. Slide the upper tube end onto the deck chute. Figure 3-12
19. Slide the upper tube end onto the catcher lid inlet tube. Figure 3-12
20. Secure with clamp on catcher lid inlet tube. Figure 3-12
21. Attach the weights to the front of the mower. Figure 3-13

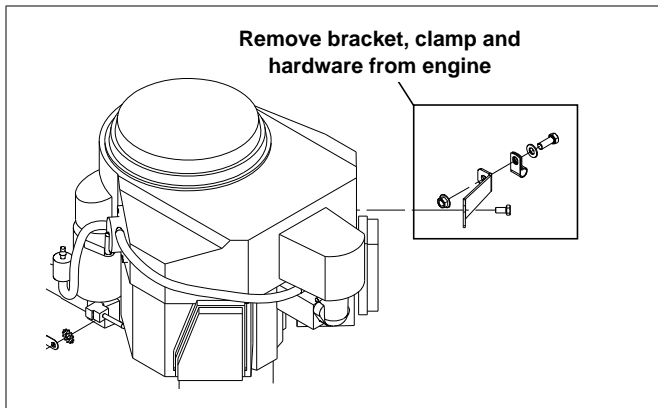


Figure 3-9

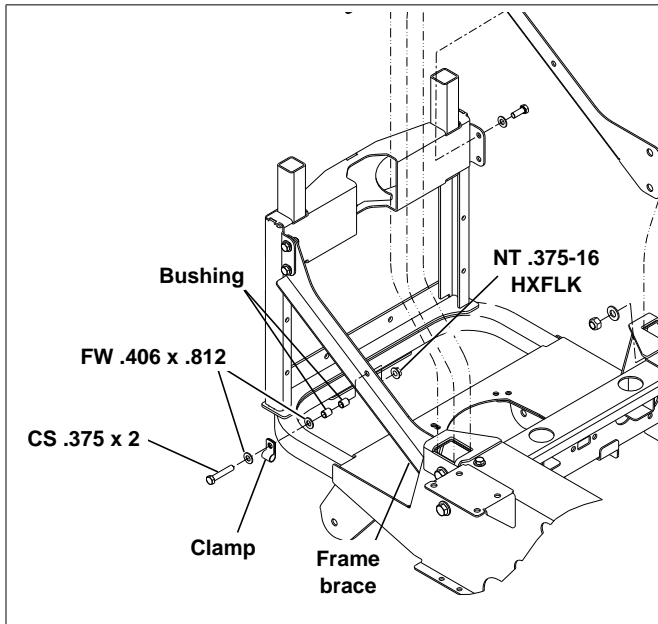


Figure 3-10

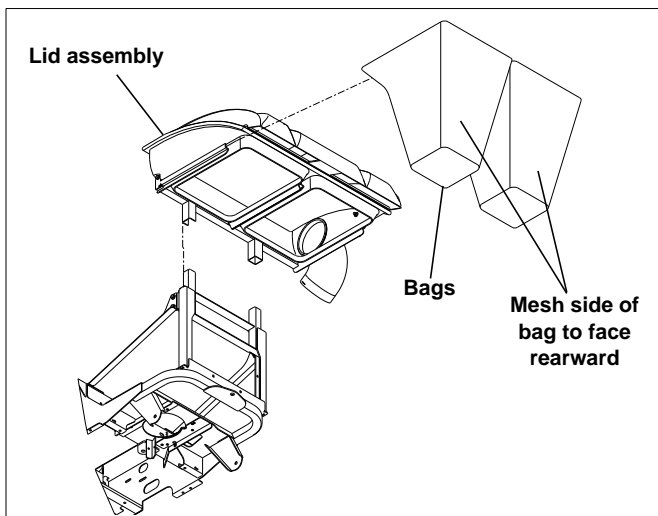


Figure 3-11

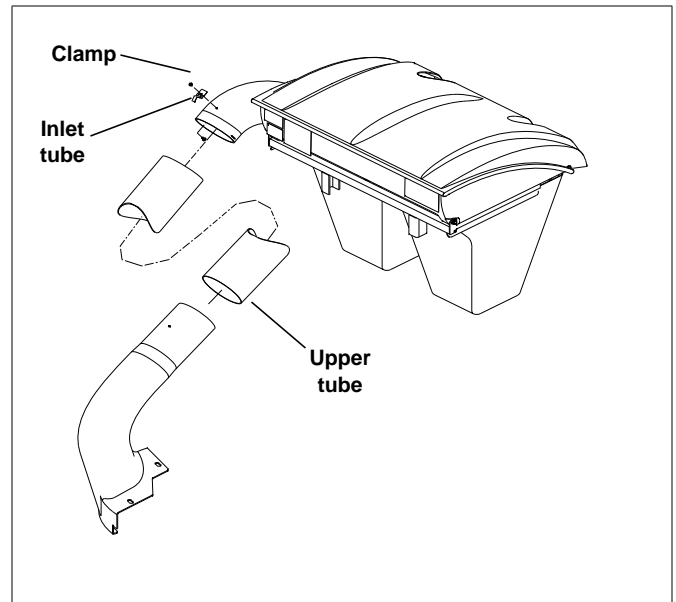


Figure 3-12

22. Place the bags in the catcher assembly, making sure that the non-mesh side of the bag is towards the operator, close the hood and fasten in place using the elastic latch. Figure 3-11 and Figure 3-14
23. Reconnect the negative battery cable.

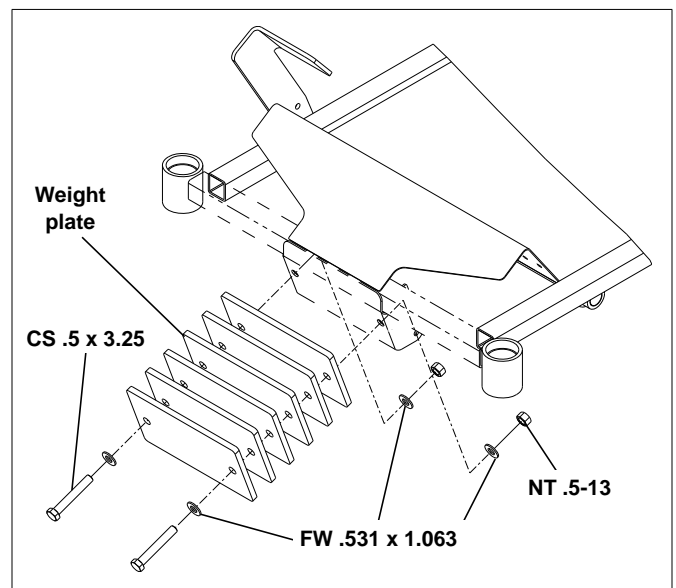


Figure 3-13



WARNING: Do not operate deck without discharge chute or complete catcher system in place.

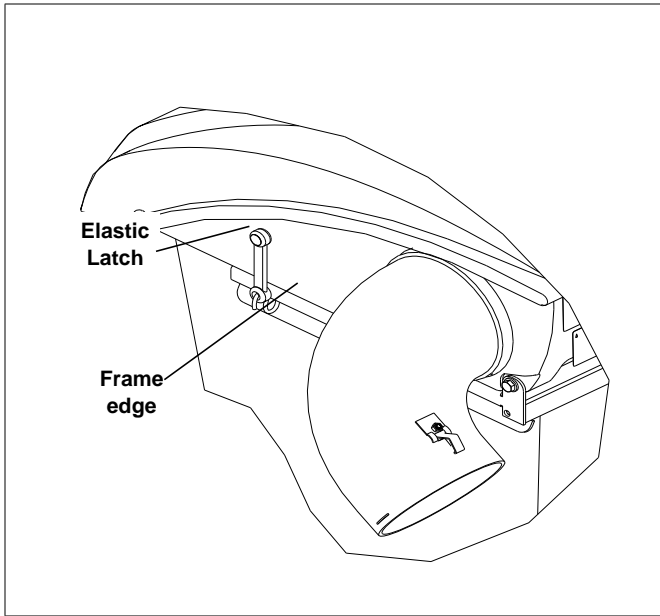


Figure 3-14

OPERATION

Vacuum Pickup and Collection

Follow normal mower start-up and operating procedures as outlined in the mower owner's manual. The rear catcher will operate when the mower deck clutch switch is engaged. To stop the rear catcher, return the deck clutch switch to the disengaged position.

Proceed to mow in the normal manner and occasionally glance at the upper tube. When the bags are full the speed of debris through the tube will decrease. When the bags are filled, move the deck clutch switch to the disengaged position and drive the machine to the unloading area.

It is best that the bags be unloaded before the discharge chute and tube areas become clogged. If clogging occurs, it will be necessary to clean the discharge chute and tube areas of all material before starting to mow again.



WARNING: Make certain the engine is turned off, the steering control levers are in the park brake position and the ignition key is removed from the ignition switch and be sure blades have stopped before cleaning the discharge chute and transfer tube areas.



WARNING: Never place hands or feet into the discharge area. The mower blade is relatively close to the housing and will cause severe injury. Use a probe to clean debris from catcher chute adapter area.



WARNING: Never engage mower deck unless catcher transfer tube is clamped in place on rear catcher lid intake tube and inserted into catcher chute outlet tube. Figure 4-3

Unloading the Catcher



WARNING: Park the unit on a level surface, disengage the deck clutch switch, place the steering control levers in the park brake position and shut the engine off. Make certain the deck clutch switch is in the disengaged position before unloading.

Get off the mower. Unhook the elastic latch from the catcher frame. Raise the catcher lid, remove the bags and dump them, Figure 4-1.

Return the bags to the catcher assembly, making sure that the

non-mesh side of the bag is towards the operator, close the catcher lid and re-hook the elastic latch. Figure 4-1 and Figure 4-2.

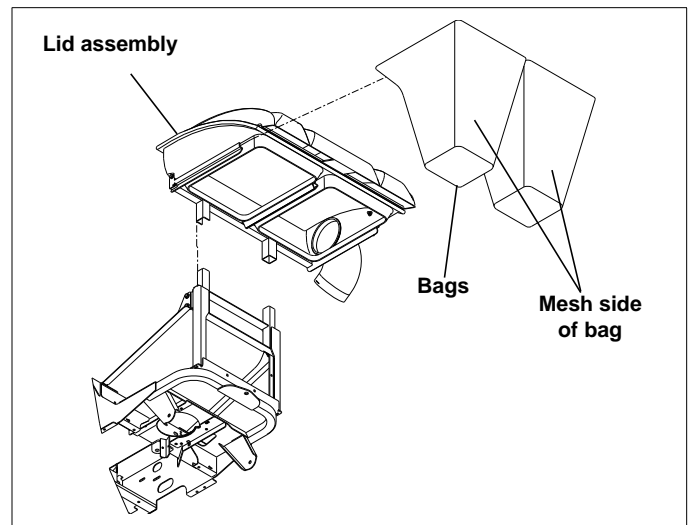


Figure 4-1

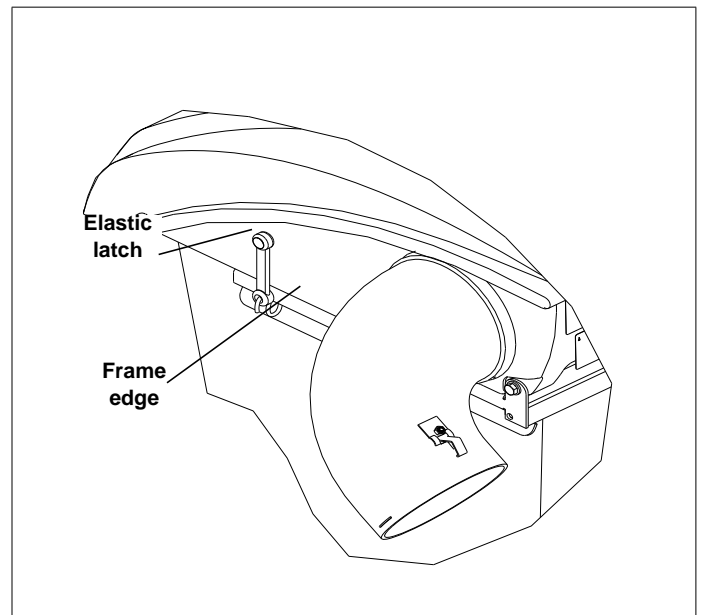


Figure 4-2

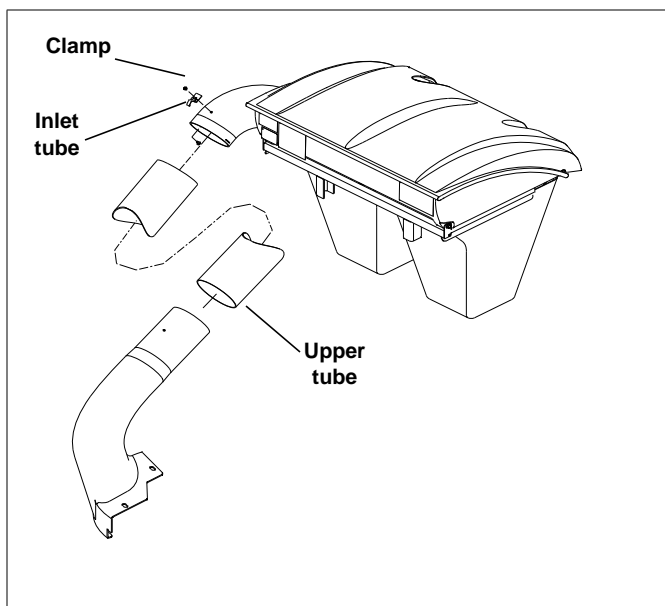


Figure 4-3

MAINTENANCE & STORAGE

Transfer Tube Maintenance



WARNING: Never work on the mower deck when the engine is running.



WARNING: Clean flammable material from machine. Prevent fires by keeping engine compartment, top of deck, exhaust area, battery, hydraulic lines, fuel line, fuel tank and operator's station clean of accumulated trash, grass clippings, and other debris. Always clean up spilled fuel and oil.

The tube and discharge chute should be kept clean and free of any accumulation of matted clippings or other obstructions. Occasional clogging may also occur when working in heavy, wet or matted grass.



WARNING: Prevent objects being thrown and the accumulation of grass clippings and other debris in engine compartment by NEVER operating mower deck unless:

- Both bags are installed.
- Hood is lowered and latched.
- Upper tube is in place on the discharge chute outlet and on the catcher lid intake tube and clamped. Figure 5-1 and Figure 5-2

To service the upper tube, remove the tube from the unit. The tube can be cleaned by using soapy water and washing the inside of the tube with a pressure washer. Rinse with water.

To clean the bags, hand wash with soap and water; rinse with clean water.

Storage

When your mower is to set idle for a period of time, scrape and remove the matted grass material from inside the hood and clean the bags.

Check for loose or missing hardware, tighten or replace. Also check for badly worn or damaged parts, consider replacing them at this time. Touch up chipped paint areas, your dealer has aerosol spray paint available.

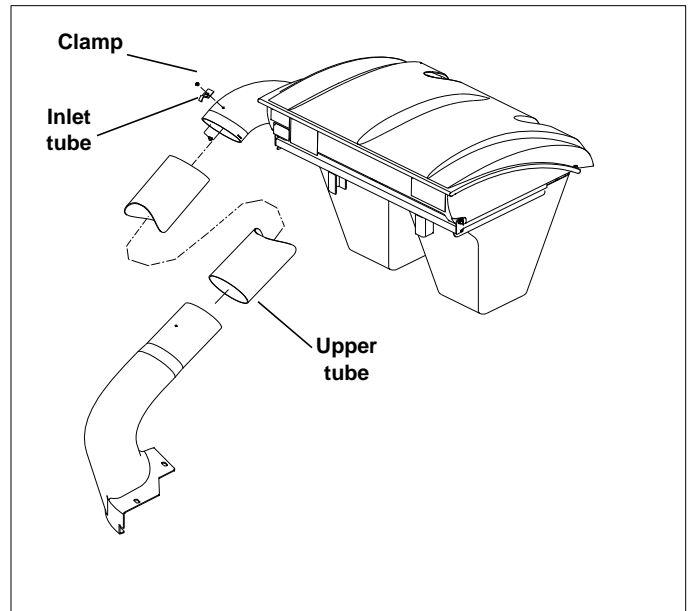


Figure 5-1

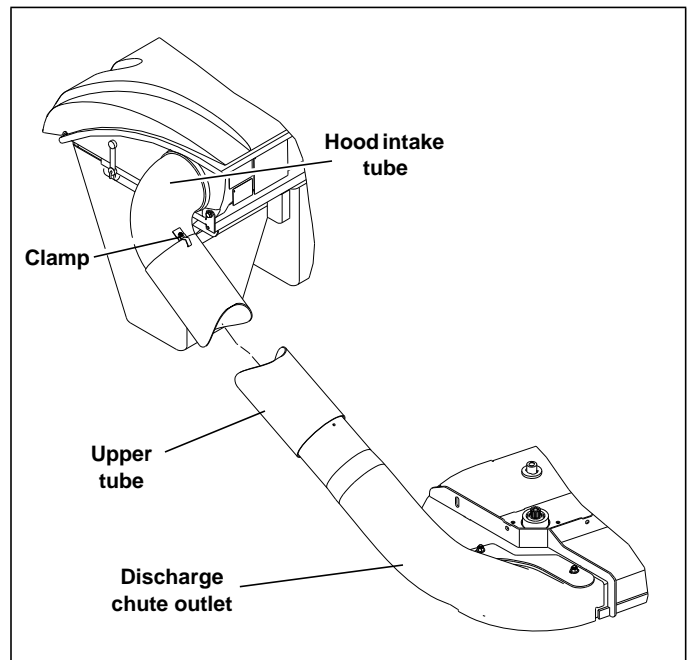


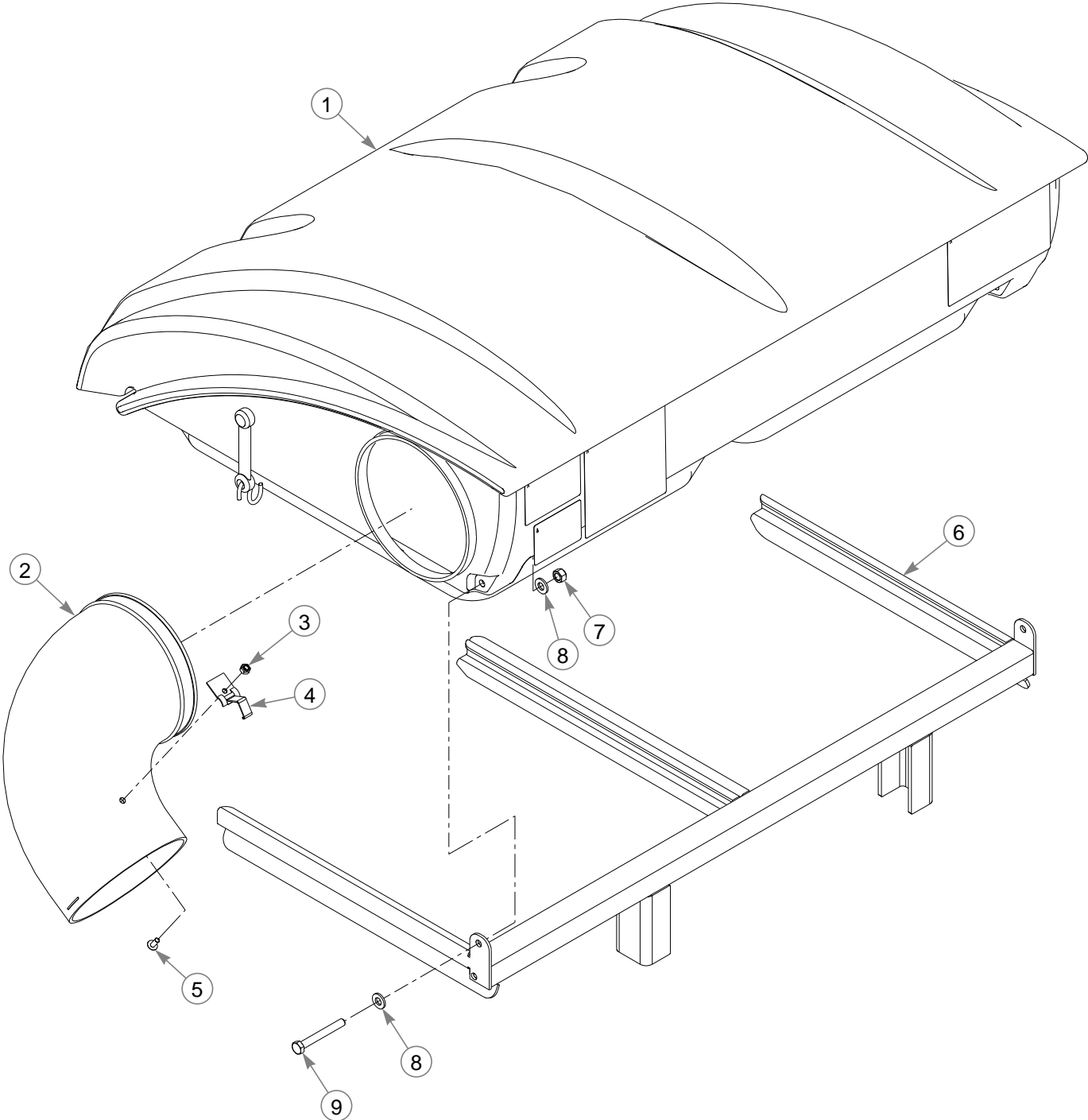
Figure 5-2

Illustrated Parts List

Table of Contents

2 Bag Catcher	6-2
Plastic Lid—602603.	6-4
Frame Adapter.	6-6
42"/46" Deck Adapter	6-8
48" Deck Adapter.	6-10
54" Deck Adapter.	6-12

2 Bag Catcher

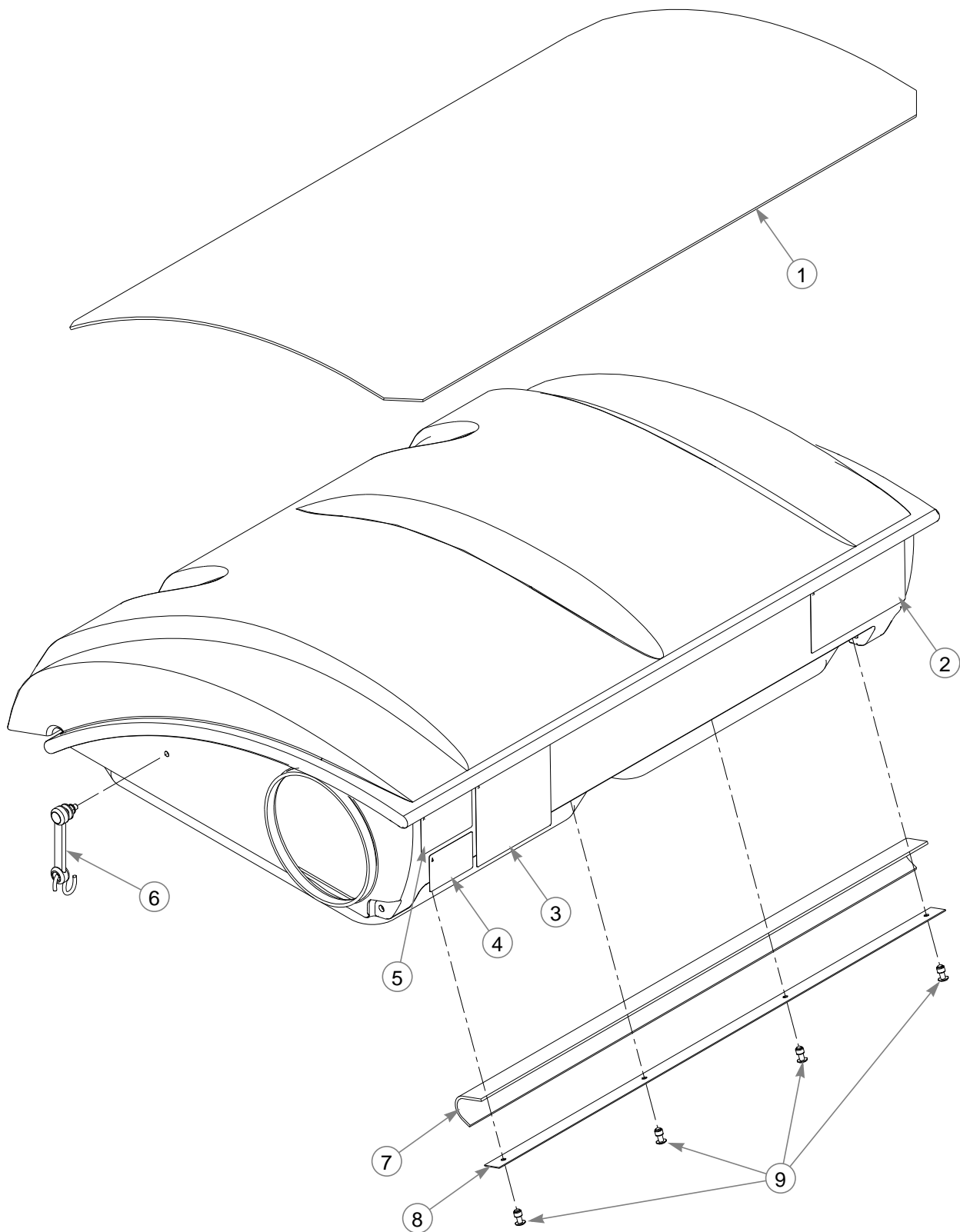


2 Bag Catcher

INDEX NO.	PART NO.	QTY	DESCRIPTION
1	602603	1	PLASTIC LID ASSEMBLY
2	602600	1	LID ELBOW CHUTE
3	059832	1	NT #10-24 HX NL ZN
4	602830	1	SNAP FASTENER
5	060723	1	MS #10-24 X .500 TH SL BO
6	602599	1	FRAME
7	058776	2	NT .312-18 HX NL ZN
8	768523	4	FW .343 X .687 X .051/.080 HD ZN/YL
9	710087	2	CS .312-18 X 2.50 HX G5 ZN

NOTES:

Plastic Lid—602603

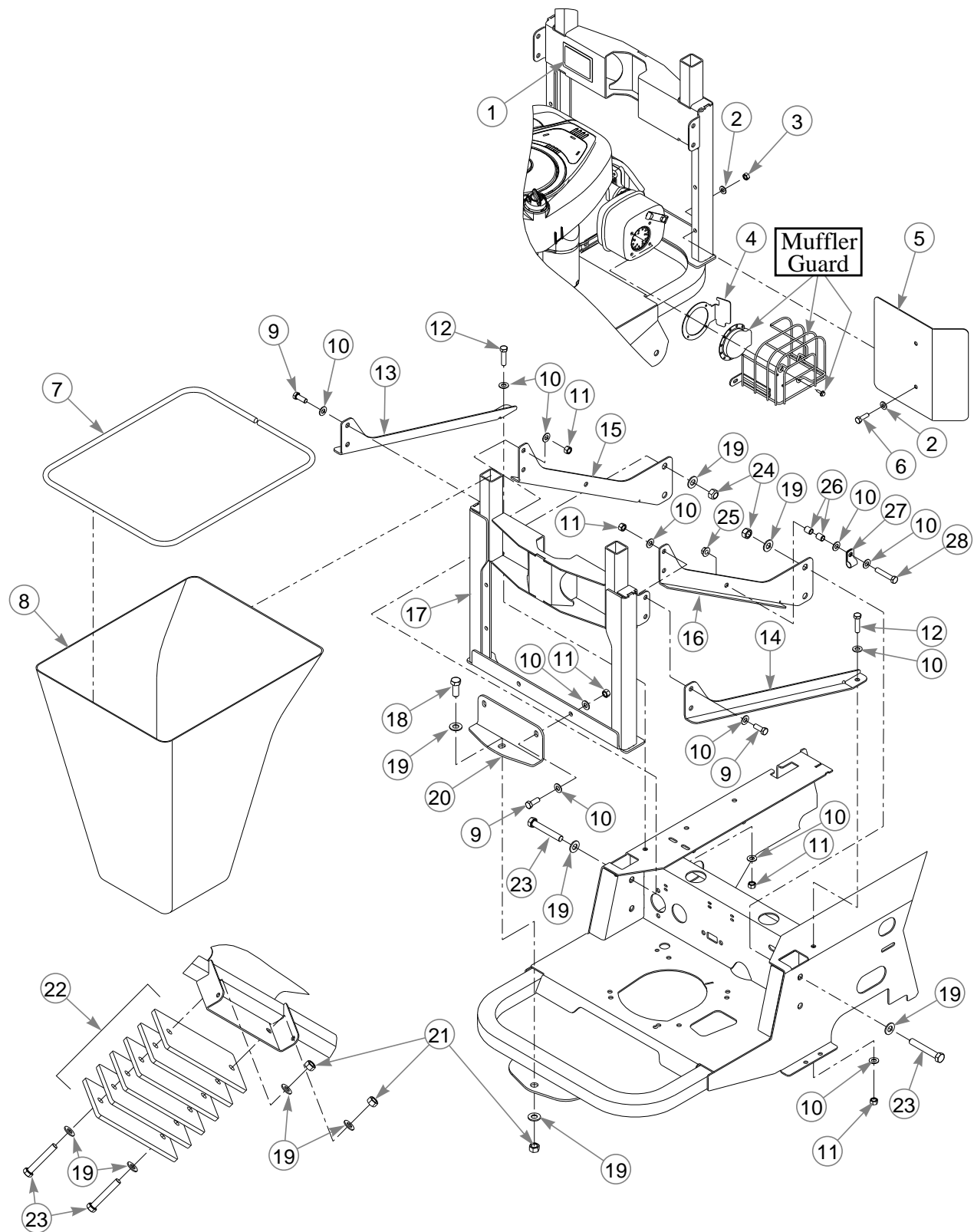


Plastic Lid—602603

INDEX NO.	PART NO.	QTY.	DESCRIPTION
1	602601	1	CATCHER VENT GUARD
2	602632	1	MADE IN USA DECAL
3	602635	1	TURN OFF WARNING DECAL
4	602633	1	HEARING PROTECTION DECAL
5	602634	1	HOSE WEAR DECAL
6	602602	1	ELASTIC LATCH
7	603858	1	RUBBER SEAL
8	603857	1	DUST GUARD BRACE
9	603859	4	5MM PLASTIC RIVET

NOTES:

Frame Adapter



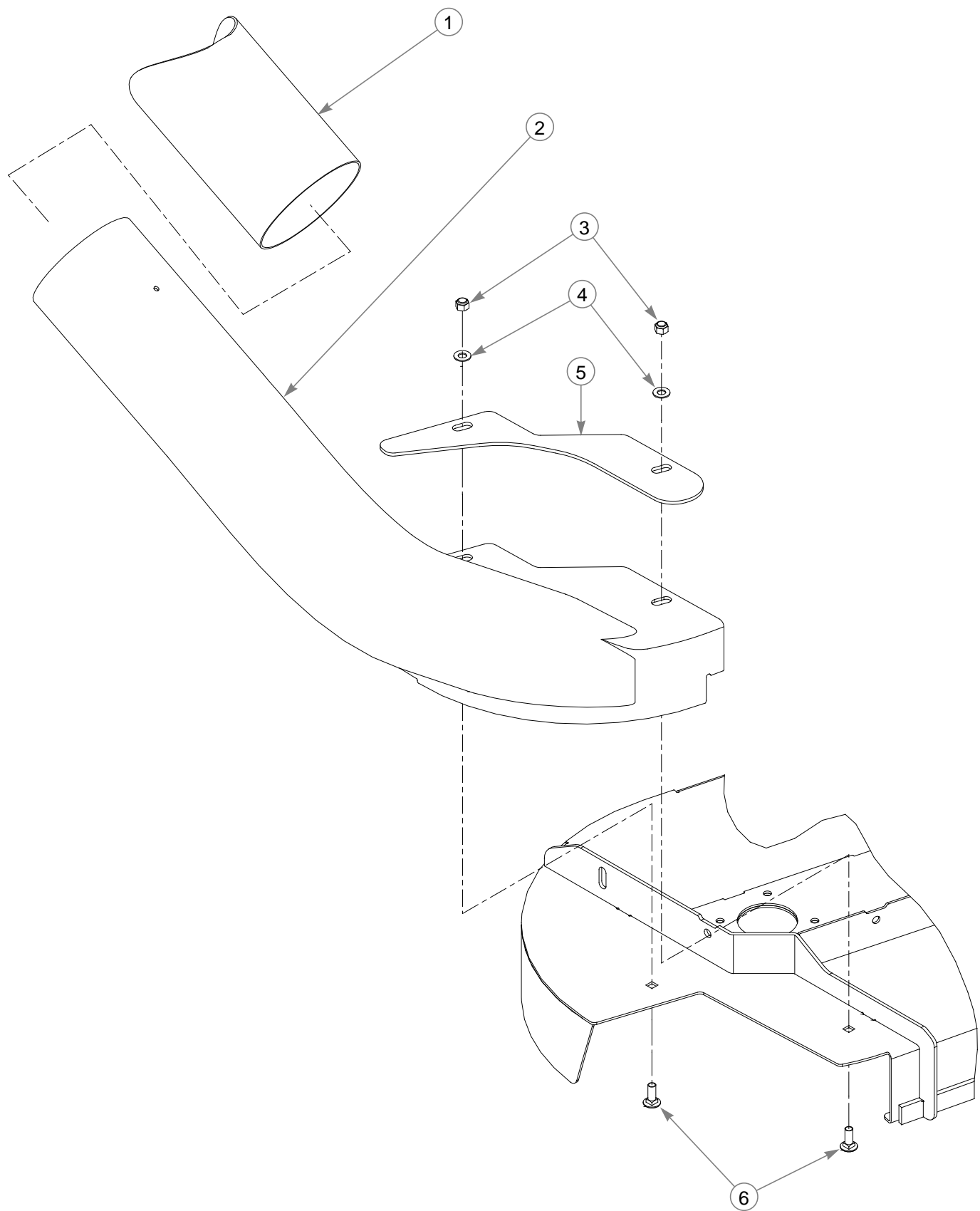
Frame Adapter

INDEX NO.	PART NO.	QTY.	DESCRIPTION
1	N/A	1	TURF PRODUCTS SERIAL NO. PLATE
2	768523	4	FW .343 X .687 X .051/.080H
3	034272	2	NT .312-18 HX G5 ZNYC
4	111462	1	EXHAUST DEFLECTOR
5	112707	1	CATCHER SHIELD
6	036236	2	CS .312-18 X 1.000 HX G5
7	602611	2	CATCHER BAG FRAME
8	602596	2	TALL ADJUSTED BAG
9	036244	6	CS .375-16 X 1.000 HX G5
10	767954	18	FW .406 X .812 X .060 SAE
11	054502	8	NT .375-16 HX GRD 5 ZNY
12	080655	2	CS .375-16 X 1.500 HX G5
13	112677	1	LS FRAME BRACE
14	112678	1	RS FRAME BRACE
15	112680	1	LS ROPS FRAME BRACE
16	112681	1	RS ROPS FRAME BRACE
17	112655	1	CATCHER SUPPORT
18	705954	1	CS .500-13 X 1.250 HX G5 ZN
19	767962	14	FW .531 X 1.063 X .090 SAE
20	112679	1	HITCH MOUNT PLATE
21	008193	3	NT .500-13 HX G5 ZNYC
22	111544	6	CATCHER WEIGHT
23	077859	6	CS .500-13 X 3.250 HX G5
24	023317	4	NT .500-13 UNT LK G8 ZN
25	016899	1	NT .375-16 HXFLK ZNYC
26	773275	2	BUSHING, .384 X .500 X .615
27	000398	1	CLAMP
28	016410	1	CS .375-16 X 2.00 G5 ZNYC

NOTES:

1. In the event the serial number tag becomes damaged or illegible, please contact your authorized dealer to order a replacement.

42"/46" Deck Adapter

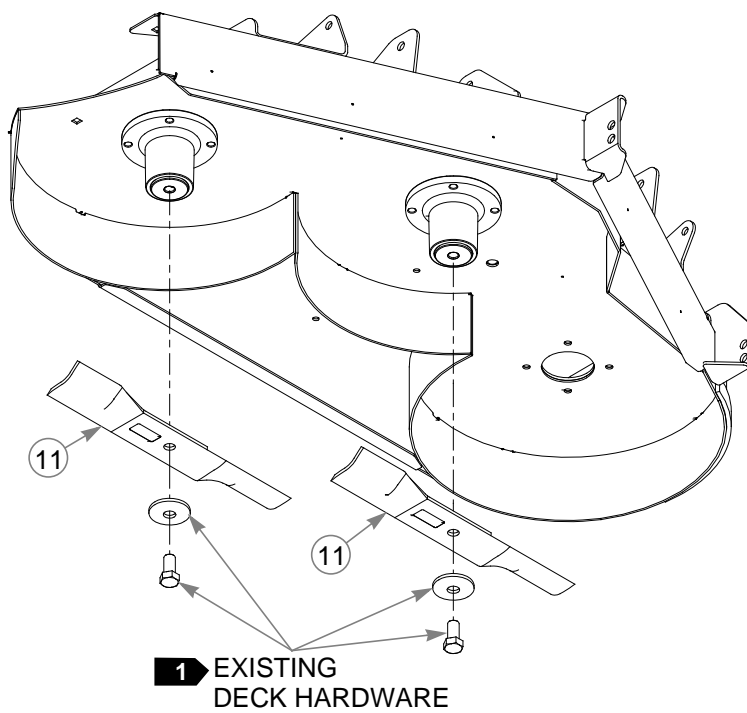
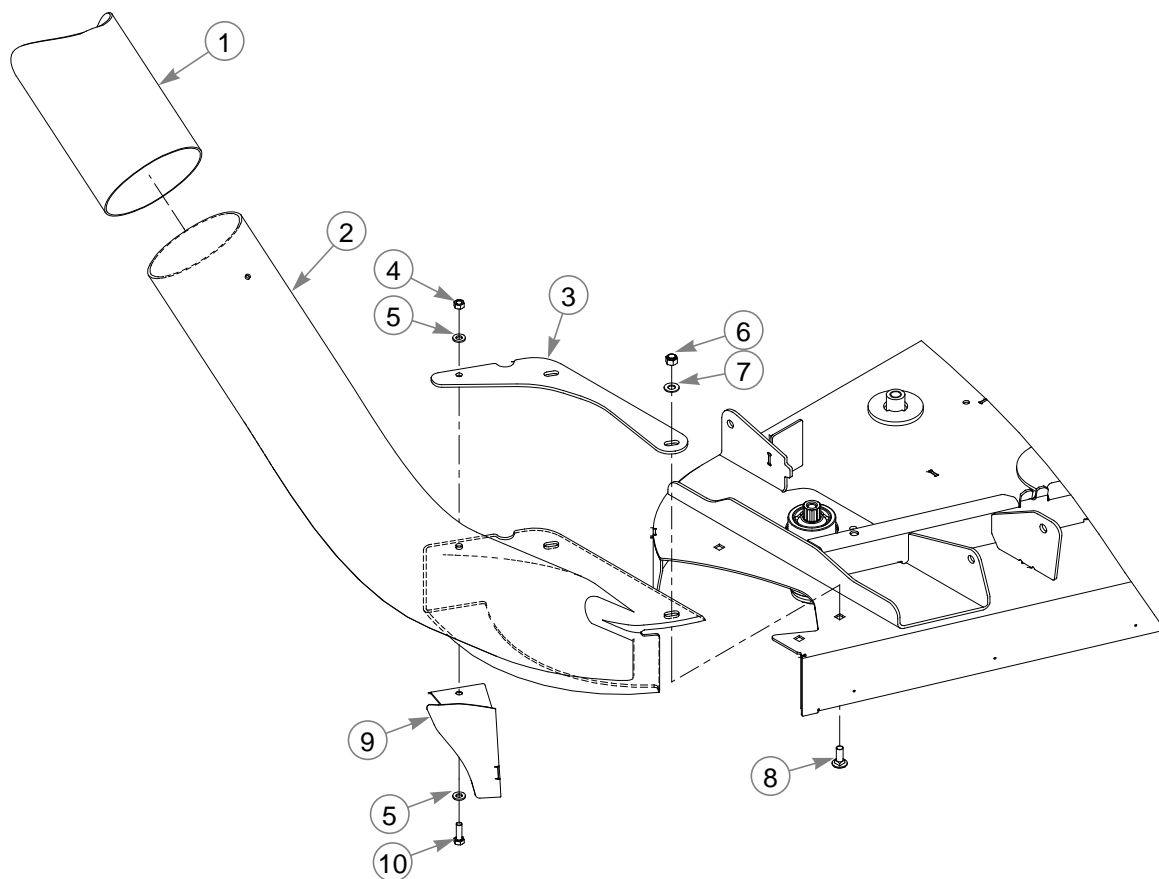


42"/46" Deck Adapter

INDEX NO.	PART NO.	QTY.	DESCRIPTION
1	602666	1	6.00" X 31.0" FLEX TUBE
2	602577	1	CATCHER CHUTE
3	086660	2	NT .375-16 HX G5 ZN NY
4	767954	2	FW .406 X .812 X .060 SAE
5	112449	1	42"/46" CHUTE BRACE
6	025395	2	CB .375-16 X1.000 STD ZN

NOTES:

48" Deck Adapter



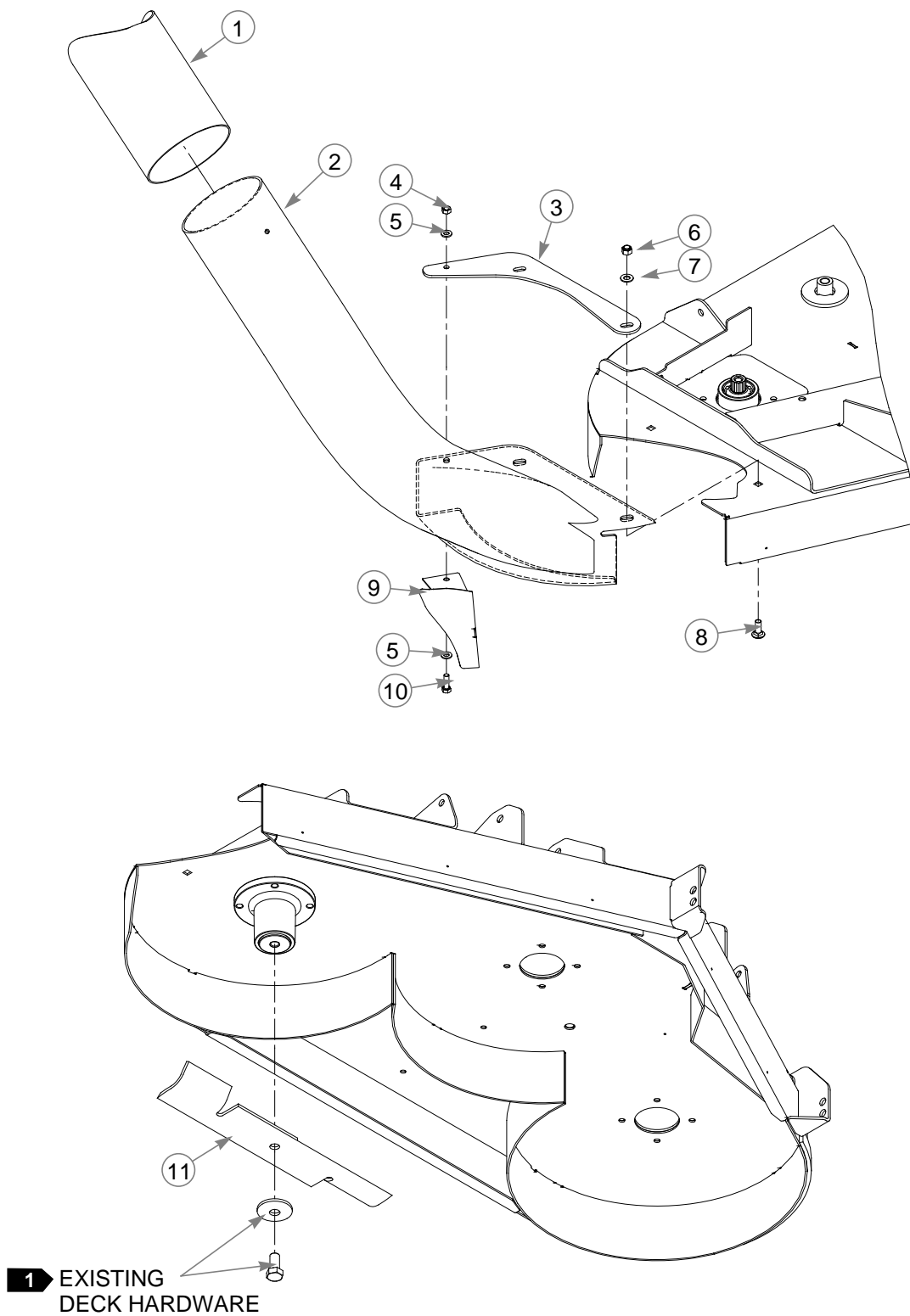
48" Deck Adapter

INDEX NO.	PART NO.	QTY	DESCRIPTION
1	602677	1	6.00" X 35.0" FLEX TUBE
2	602594	1	48" CATCHER CHUTE
3	112461	1	CATCHER CHUTE BRACE
4	034272	1	NT .312-18 HX G5 ZN
5	768523	2	FW .343 X .687 X .051/.080 HD ZN/YL
6	086660	2	NT .375-16 HX G5 ZN NY
7	767954	2	FW .406 X .812 X .060 SAE HRD ZN
8	025395	2	CB .375-16 X 1.000 STD ZN
9	112454	1	48" CHUTE BAFFLE
10	036236	1	CS .312-18 X 1.000 HX G5 ZN
11	795757	2	BLADE, F16.50"-H-F-CW

NOTES:

1. Torque to 118 ft.-lbs.

54" Deck Adapter



54" Deck Adapter

INDEX NO.	PART NO.	QTY	DESCRIPTION
1	602677	1	6.00" X 35.0" FLEX TUBE
2	602595	1	54" CATCHER CHUTE
3	112462	1	54" CHUTE BRACE
4	034272	1	NT .312-18 HX G5 ZN
5	768523	2	FW .343 X .687 X .051/.080 HD ZN/YL
6	086660	2	NT .375-16 HXZY NL
7	767954	2	FW .406 X .812 X .060 SAE HRD ZN
8	025395	2	CB .375-16 X 1.000 STD ZN
9	112468	1	54" CHUTE BAFFLE
10	036236	1	CS .312-18 X 1.000 HX G5 ZN
11	602416	1	BLADE, 18.50" CAT-F-CW

NOTES:

1. Torque to 118 ft.-lbs.

INDEX

	PAGE		PAGE
000398	6-7	602596	6-7
008193	6-7	602599	6-3
016410	6-7	602600	6-3
016899	6-7	602601	6-5
023317	6-7	602602	6-5
025395	6-9, 6-11, 6-13	602603	6-3
034272	6-7, 6-11, 6-13	602611	6-7
036236	6-7, 6-11, 6-13	602632	6-5
036244	6-7	602633	6-5
054502	6-7	602634	6-5
058776	6-3	602635	6-5
059832	6-3	602666	6-9
060723	6-3	602677	6-11, 6-13
077859	6-7	602830	6-3
080655	6-7	603857	6-5
086660	6-9, 6-11, 6-13	603858	6-5
111462	6-7	603859	6-5
111544	6-7	705954	6-7
112449	6-9	710087	6-3
112454	6-11	767954	6-7, 6-9, 6-11, 6-13
112461	6-11	767962	6-7
112462	6-13	768523	6-3, 6-7, 6-11, 6-13
112468	6-13	773275	6-7
112655	6-7	795757	6-11
112677	6-7	Assembly	3-2
112678	6-7	Parts and service	1-1
112679	6-7	Parts list	3-1
112680	6-7	Storage	5-1
112681	6-7	To the new owner	1-1
112707	6-7	Transfer Tube Maintenance	5-1
602416	6-13	Unloading the Catcher	4-1
602577	6-9	Using this manual	1-1
602594	6-11	Vacuum Pickup and Collection	4-1
602595	6-13	Warranty registration	1-1